

PULSE FIELD HEROES

ATTACK!

GET TO KNOW THE HEROES
AND VILLAINS IN YOUR PULSES.

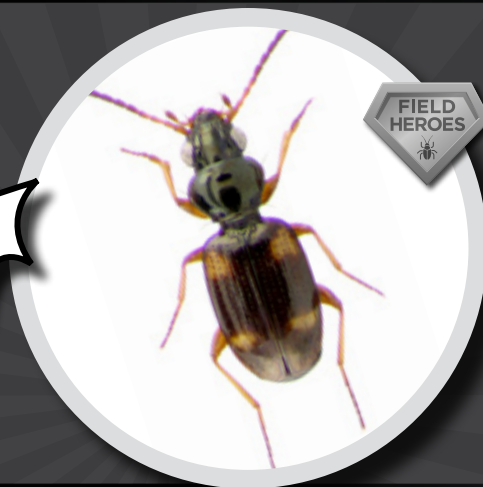
PEA LEAF WEEVIL

These root nodule destroyers are small, white c-shaped larvae. Adult pea leaf weevils eat foliage and are slender, greyish-brown beetles – about 5 mm long with a broad-shaped snout.



Photo: cc by J. Williams

VS



CARABID GROUND BEETLES

(*Bembidion quadrimaculatum*)

These small, dark-brown beetles devour pea leaf weevil eggs. Look for four pale yellow or orange spots on the bodies of these Field Heroes.

PEA APHID

These plant sap suckers are green and pear shaped. They're just 3 mm long and 1.5 mm wide with long slim legs.



Photo: cc by J. Gavloski

VS



Photo: cc by P. Greenes

LADY BEETLES

Also known as Lady Bugs, the larval form is alligator-like in shape. The larvae is black with white, yellow, red or orange markings. These Field Heroes can eat as many as 160 aphids in 24 hours.

PARASITOID WASPS

Aphidius ervi are small, black wasps with brown legs. Females lay a single egg inside of an aphid, which hatches into a larva that consumes the aphid from the inside out.

CUTWORMS

Cutworm larvae eat through young plants. These caterpillars are about 3 to 5 cm long, with 3 pairs of true legs and 5 pairs of false ones. They hide in the day and feed at night. Their colour ranges from pale to black, and their markings may be lines or spots.



VS



Photo: cc by J. Gavloski

GROUND BEETLES

A ground beetle's head is narrower at the eyes than the section behind head and its front wings may have striations or pits. There are 400 species of this Field Hero on the Canadian Prairies. Depending on their size, ground beetles may attack eggs, larvae or pupae of cutworm.

PARASITOID WASPS

Depending on the species, parasitoid wasps can be extremely tiny. For smaller species, 4 or 5 will fit on the head of a pin, which makes them difficult to identify. These Field Heroes lay their eggs and pupate within cutworm, causing the pest to become a "mummy."

- Scout for pests and predators
- Only spray when economic thresholds are exceeded
- Use selective insecticides, where possible
- Consult the label for best time to spray
- Rotate crops
- Maintain habitat for beneficial insects



THINK BENEFICIALS
BEFORE YOU SPRAY

POWERED BY:



FIELDHEROES.CA

@FIELDHEROES



ALBERTAPULSE.COM